



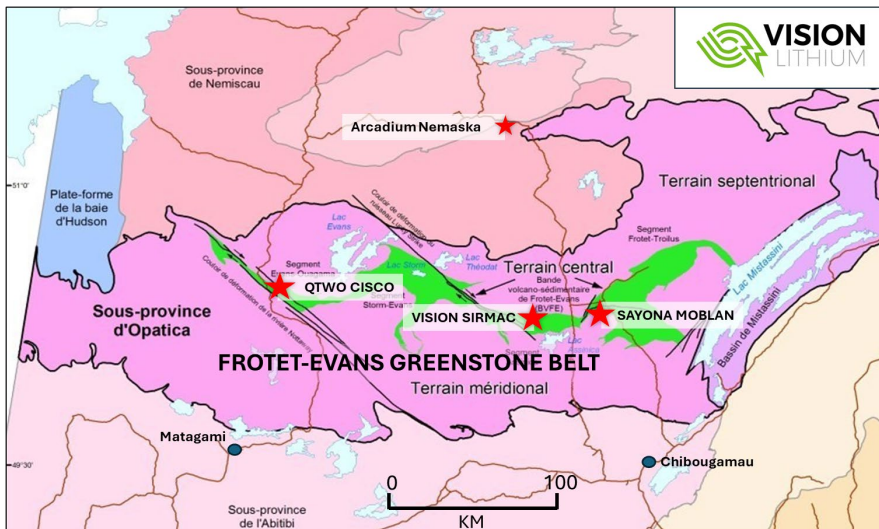
LITHIUM EXPLORATION IN CANADA

December 2024

COMPANY OVERVIEW

Vision Lithium is a junior exploration company focused on exploring and developing high quality battery mineral assets including lithium and copper in safe jurisdictions, primarily Canada. The Company is led by skilled and qualified mineral exploration and business professionals with a deep understanding of the lithium battery materials market which is driven by lithium-ion batteries. Vision Lithium is committed to discovering new world class assets and bringing these assets to production, starting with its flagship lithium projects, the Sirmac (Quebec) and Godslith (Manitoba) lithium properties, as well as several polymetallic projects in eastern Quebec and New Brunswick.

A new area of high-grade Cesium pegmatites was discovered late in 2024, in the southern portion of the Sirmac property, approximately 10 km south-east of the #5 Dike.



Property	Commodity	Ownership	Area (ha)
Godslith – MB	Lithium	100%	5,560
Sirmac – QC	Lithium	100%	7,670
Cadillac – QC	Lithium	100%	19,070
Dome Lemieux – QC	Copper	100%	12,714
Red Brook Benjamin – NB	Copper, Zinc, Silver	100%	5,817
St. Stephens – NB	Nickel, Copper, Cobalt	50%	880

VLI	ABEPF	1AJ2
TSX-V	OTCQB	Frankfurt

DIRECTORS & MANAGEMENT

Yves Rougerie	President & CEO
Victor Cantore	Executive Chairman of the Board
Nancy Lacoursière	CFO
Robert C. Bryce	Director
Jonathan Gagné	Director
Scott Jobin-Bevans	Director

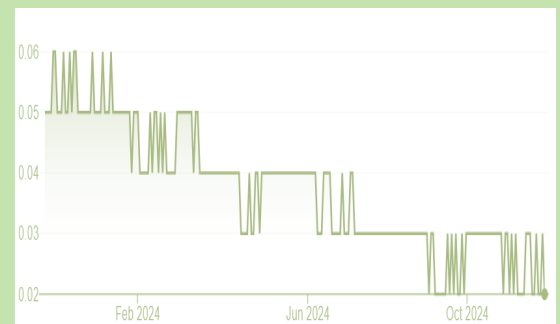
LATEST VLI ANNOUNCEMENTS

12/02/24	Vision Lithium Reports High-Grade Cesium Discovery up to 1.94% Cs2O at Sirmac Property
01/08/24	Provides a Review of 2023 and Discusses Plans for 2024
08/10/23	Files Updated Preliminary Economic Assessment Technical Report for the Sirmac Lithium Project
08/01/23	Options Cadillac Lithium Property to ASX-listed Olympio Metals
03/27/23	Files Preliminary Economic Assessment Technical Report for the Sirmac Lithium Project
02/21/23	PEA on Sirmac Boasts a Pre-tax 839% IRR, C\$183M Pre-tax NPV5% and Less than One-Year Payback
04/13/22	Reports drill results from its Cadillac Lithium property – intersects up to 3.14% LI ₂ O

KEY FINANCIALS (December 2024)(CAD)

Shares Issued	262,352,485
Options	16,000,000
Fully Diluted	278,352,485
Market Capitalization	~\$5M
One Year Low-High	\$0.02-\$0.055

SHARE PRICE PERFORMANCE



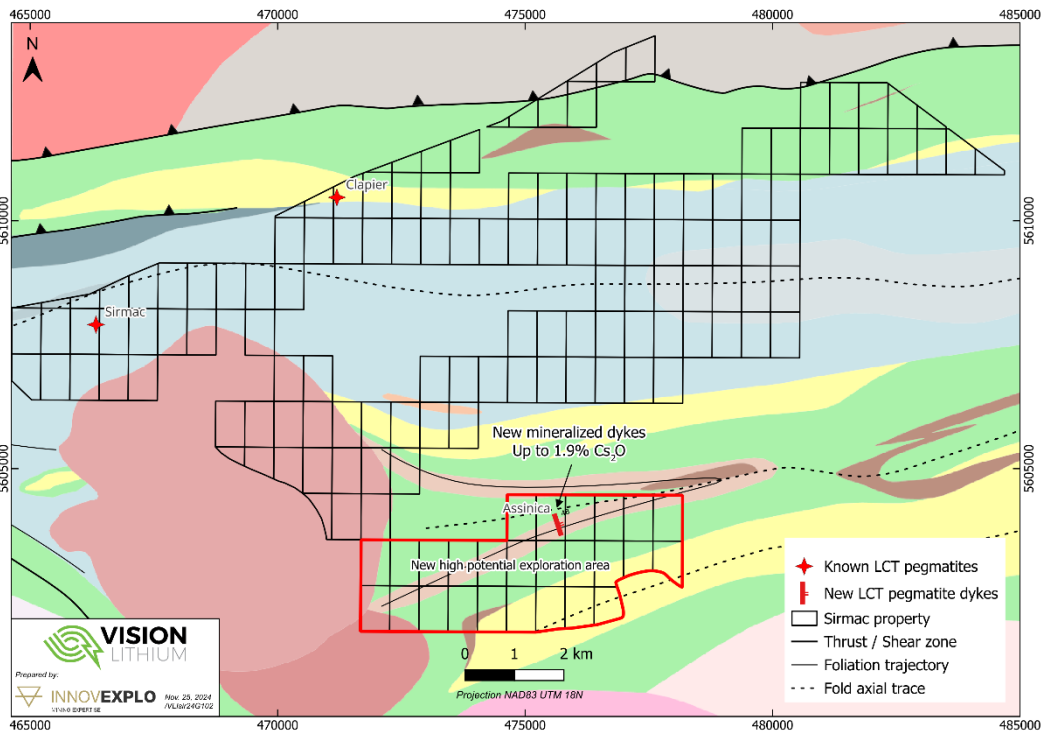
CONTACT

www.visionlithium.com

info@visionlithium.com

SIRMAC CESIUM DISCOVERY

- The very high-grade Cesium results suggest these dikes are highly fractionated LCT pegmatites with the potential of hosting economic Cesium mineralization.
- The dikes also exhibit highly anomalous values for Lithium, Tantalum and Rubidium.
- The highly anomalous values in the basalt samples for Cesium and Lithium indicate a strong alteration halo surrounding the pegmatite dikes. This suggests the dikes are potentially larger/wider at depth and/or along strike.



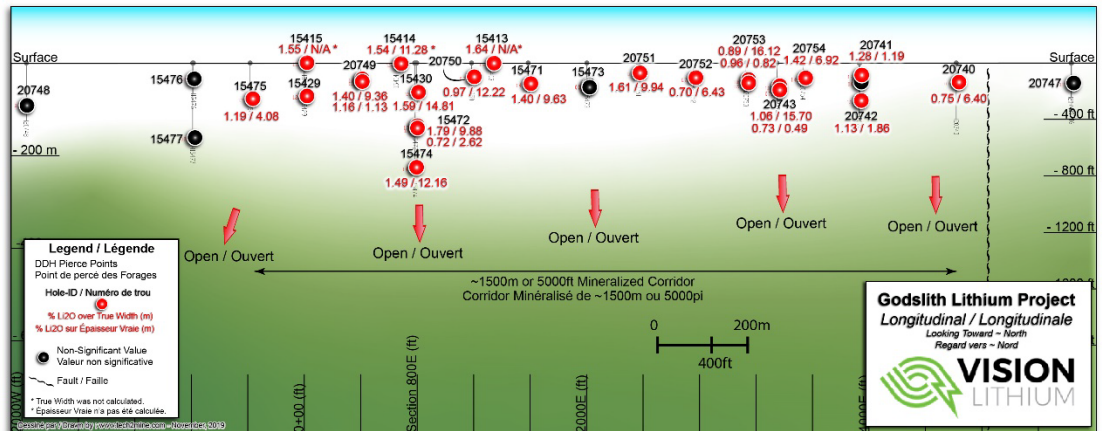
Grab Sample	Cesium ppm	Cs ₂ O* %	Lithium ppm	Li ₂ O* %	Tantalum ppm	Rubidium ppm
Pegmatite 1	13,150	1.39	3,230	0.695	201	6,010
Pegmatite 1	18,300	1.94	860	0.185	264	4,610
Basalt 1	179	0.02	410	0.088	1	99
Pegmatite 2	8,410	0.89	2,880	0.620	257	5,370
Basalt 2	1,320	0.14	1,290	0.278	1	961

Note: Cs₂O% = (Cs ppm/10 000) * 1.06; Li₂O% = (Li ppm/10 000) * 2.153

GODSLITH LITHIUM, MANITOBA

PROJECT HIGHLIGHTS

- Mineralized Pegmatite drilled >2 km strike length
- Homogenous and continuous mineralization incl. 1.54% Li₂O at surface and similar grade of 1.54% in deepest hole at only 243 m of depth
- Suggests mineralization at depth similar to surface and opportunity to significantly increase historical resource*



- **4.8 Mt @ 1.27% Li₂O Historical Indicated and**
- **4.6 Mt @ 1.14% Li₂O Historical Probable***

* While the Company considers these historical estimates for to be relevant to investors as they may indicate the presence of mineralization, a qualified person has not done sufficient work for Vision Lithium to classify the historical estimates as current "mineral resources" or "mineral reserves" (as defined in NI 43-101).